

# LADAKH

A WANDERER'S SPECTACLE



## Package Details

6 Days/5 Nights Plan for Ladakh

Total Cost: 49,328

### Package Inclusions

Rates are tentative only. Connect to us for the best rates.

Cost is total amount for **2**

Deluxe Hotels

**Meals mentioned at hotel section.**

1.0 Personal Scorpio Xylo Ertiga Tavera or Similar

### Package Highlights

Land Package Cost: INR 49,328

4 Nights Leh

1 Night Nubra Valley

Day Trip to Pangong Lake

Day trip to Sham Valley

Sangam, Magnetic Hills, Paththar Sahib

## Check Our Reviews

First thing first, knowing us and reviewing our services are most important to you. We invite you to check our client's testimonials before diving into package details.

[Reviews](#)

[Google](#)

[Facebook](#)

[Trip Advisor](#)

[TT](#)





## Hotels In the Package

We will check the availability, first, as per your preference (Within the Listed Choice). However the availability in your preferred hotel is not guaranteed. We will communicate the exact hotel name before receiving any payment.

### Leh - 4 Nights Staying on - Night# 1,2,4,5

**Option# 1 - [The Grand Ladakh](#) 3 Star Deluxe Hotel**  
**1 Deluxe Room (First Category) is/are provided along with Breakfast and Dinner at Hotel.**

**Check In 10 a.m.**  
**Check Out 8 a.m.**

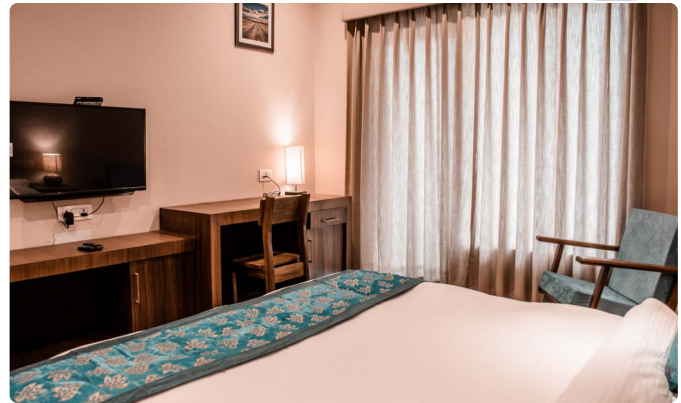


#### Facility Available

Wifi	Room Service	Restaurant	Bar	Swimming Pool	Gym	Bathtub	AC	Heater
Free	Free	Yes	No	No	No	Not-Available	No	No

**Option# 2 - [Utpala Retreat](#) 3 Star Deluxe Hotel**  
**1 Deluxe Room (First Category) is/are provided along with Breakfast and Dinner at Hotel.**

**Check In 10 a.m.**  
**Check Out 9 a.m.**



Facility Available

<b>Wifi</b>	<b>Room Service</b>	<b>Restaurant</b>	<b>Bar</b>	<b>Swimming Pool</b>	<b>Gym</b>	<b>Bathtub</b>	<b>AC</b>	<b>Heater</b>
Free	Free	Yes	No	No	No	Not-Available	No	No



## Nubra Valley - 1 Nights Staying on - Night# 3

**Option# 1 - [DE Nubra Camp](#) 3 Star Deluxe Camp**  
**1 Deluxe Camp (First Category) is/are provided along with Breakfast and Dinner at Hotel.**

**Check In** noon  
**Check Out** 9 a.m.



### Facility Available

<b>Wifi</b>	<b>Room Service</b>	<b>Restaurant</b>	<b>Bar</b>	<b>Swimming Pool</b>	<b>Gym</b>	<b>Bathtub</b>	<b>AC</b>	<b>Heater</b>
Free	Free	Yes	No	No	No	Not-Available	Yes	No

**Option# 2 - [Organic Boutique Inn](#) 3 Star Deluxe Resort**  
**1 Deluxe Room (First Category) is/are provided along with Breakfast and Dinner at Hotel.**

**Check In** noon  
**Check Out** 9 a.m.



### Facility Available

<b>Wifi</b>	<b>Room Service</b>	<b>Restaurant</b>	<b>Bar</b>	<b>Swimming Pool</b>	<b>Gym</b>	<b>Bathtub</b>	<b>AC</b>	<b>Heater</b>
Free	Free	Yes	No	No	No	Not-Available	No	No



## Detailed Itinerary

### Day# 1 - Pick up from Leh Airport and Relax

#### Starts @ Leh

Arrival Leh Kushok Bakula Airport (This must be one of the Most Sensational Flights in the World. On a clear day from one side of the aircraft can be seen in the distance the peaks of K2, Nanga Parbat, Gasherbrum and on the other side of the aircraft, so close that you feel you could reach out and touch it, is the Nun Kun massif.) Upon arrival you will met by the representative and transfer to Hotel for Check in. Half day for rest and leisure to acclimatize in Hotel.

Overnight stay @ Leh Hotel/Resort.

#### Inclusions

Inner Line Permit: Inner Line Permit is included

Pick up at Leh Airport: Vehicle, Toll Tax, Parking, & Municipal Taxes is included

### Day# 2 - LEH - EXCURSION TO SHAM VALLEY

#### Starts @ Leh

After breakfast you drive downstream along the River Indus on Leh – Kargil Highway.

Enjoy the following monument:

Hall Of Fame

Spituk Monastery

Guradwara Pather Sahib

Magnetic Hills

and Confluence i.e Sangam of Zankar and Indus river.

Later return to Leh.

Overnight stay @ Leh Hotel/Resort.

#### Inclusions

Hall of Fame, Hill, Paththar Sahib, Sangam-Spituk: Vehicle, Toll Tax, Parking, & Municipal Taxes is included.

### Day# 3 - Travel to Nubra via Khardungla

#### Starts @ Leh

Post breakfast we drive to Nubra Valley. The road journey from Leh to Nubra Valley passes over Khardung La (The Highest Motorable Road In The World) at 5,602 Mtrs / 18,390 Ft, around 39 km from Leh. En-route we will cover Diskit monastery, further drive to Hundur, Upon Arrival to Hundur where you have opportunity to ride on a bactrian camel (double humped) amidst the sand dunes of this high altitude desert with snowcapped mountains on the horizon. Between Hundur and Diskit you come across sand dunes besides the road. Seen in isolation you could well be amongst the sand dunes of the Thar Desert in Rajasthan.

Overnight stay @ Nubra Valley Hotel/Resort.

#### Inclusions



Deskit - Hunder 2 Days: Vehicle, Toll Tax, Parking, & Municipal Taxes is included.

#### Day# 4 - Return to Leh from Nubra

##### **Starts @ Nubra Valley**

Post breakfast enjoy the remaining sights in Nubra and later head back to Leh.

Overnight stay @ Leh Hotel/Resort.

##### **Inclusions**

#### Day# 5 - Day Trip to Pangong from Leh - Monastery visit on the way

##### **Starts @ Leh**

Post Breakfast, start the trip to Pangong to explore the beauty of lake

En-route visit the following monuments.

3 Idiot Famed School

Thikshey Monastery

Hemis Monastery

Shey Palace and Museum

and later we drive to Pangong via Changla Pass 5486 Mtrs.

After spending a few hours, return to Leh.

Drive back to Leh.

Overnight stay @ Leh Hotel/Resort.

##### **Inclusions**

Pangong Lake day trip: Vehicle cost is included is included.

#### Day# 6 - Return with unlimited memories of mountains

##### **Starts @ Leh**

In the morning transfer to Domestic Airport to catch the flight for your onward Destination.

End your tour on High notes.....

##### **Inclusions**

Drop at Leh Airport: Vehicle, Toll Tax, Parking, & Municipal Taxes is included





## Covid Terms and Conditions

- Fully Vaccinated Travellers (Second Dose must be taken 16 Days before Travel Date) Need Not Under Go RT-PCR Test.
- All Passengers arriving at Ladakh (By Road - Kargil/Jispa Side Or Air) must have Negative RT-PCR Report. Where Sample must be provided within 96 hours of entering Ladakh.
- Passengers are advised to web check-in as many airline carriers have shut their manned counters at the airport.
- 2 pieces of baggage are allowed per passenger.

## Trip Exclusions

- Heater Charges
- Permit-related to Rohtang Pass
- Emergency evacuation cost
- Travel/Medical insurance
- Expenses for personal nature
- Any chargeable services utilized in the hotel.
- Fees / Charges related to any tourist Permit.
- A personal medical kit including Oxygen Cylinder
- Flight Tickets/Train Ticket until unless not specified above.
- Camera Charges, and Tip at different sites and restaurants.
- Anything not mentioned under Inclusions in your itinerary is an exclusion

## Covid Postponement Policies

- Applicable only In case of Lockdown at Starting State or Destination State, or the traveller is Infected with Covid.
- 1 Year Postponement (From Date of Travel) voucher would be Provided.
- Any Cancellation charges(Cruise/Flight/vehicle cancellation & Hotel Retention) would be additional
- Our Service Charges would be Zero.
- Rate Differences, as per the new travel date, would be additional at the time of booking.
- A traveller can change the destination and increase/decrease/change the travellers, however minimum package cost must be equal/higher to postponed package cost.
- Any confirmed postponed trip, can not be cancelled further for any unforeseen reasons.
- Coordinate with Airline Flight changes/amendments/cancellations/credit-shell.
- In case of postponement, dates must be informed minimum 45 days before travel.
- In case of Cancellation, Package Cancellation Policy will be applicable.

## Terms & Conditions

- We work as a Pure Service Agent
- For Airport Pick Up/Airport Drop, vehicle can be different than committed.
- The pick up vehicle may vary from Ecco Van, Maruti Van, Xylo, Scorpio, Innova, or any vehicle available.
- Heaters are not provided in Pangong, instead hot water bags are provided if required.
- Check in and Check out time depends on the concerned Hotel policy.
- The hotel does not allow to check in with any pet.





- Package dates can be altered based on the availability of the hotel at the given date. Customer will need to bear the Excess amount if any.
- In case of any unrelated activities in the destination, the agency is not responsible for any loss and there is no refund in that case.
- In case of any unrelated activities on Roads and anywhere in the above-mentioned travel plan, the agency is not responsible for any loss and there is no refund in that case.
- In the case of transporters strike cab will not go anywhere. The agency is not responsible for any loss and there is no refund in that case.
- In any case of heavy snowfall or any Land Slide or any natural calamity roads closed then there is no refund and cab will not go anywhere and the agency is not responsible for any loss
- Refund on cancellation depends upon concerned the hotel's cancellation policy and the agency cancellation policy
- The agency is not responsible for any personal loss, any damage to passengers traveling or any mishappening any road accident during the tour.
- The agency is not responsible for any vehicle damage in terms of a mechanical fault, any electrical fault or tire bust or any other problem in the vehicle during the tour ( In this case no refund will be given)
- Entry fee to any park/Museum/ Amusement park/ Zoo/ theatre/Club/ Temple and charges for any activities is not included /Charges Related to horse Ride/Camel Ride/Yak Ride/ Paragliding/ River Rafting/Ropeway etc Games is not included
- Additional services utilized by the group will be charged and billed to the group directly by hotels.
- Any unused service, due to natural calamity or human reasons, would not be refunded.
- Check in and out time varies from hotel to hotel and it is between 07:30 hours to 12:00 hours. Early check in and late checkout request will be accommodated by the hotel during check in or check out and it is subject to availability and hotel terms.
- We are not responsible for bad weather conditions, political disrupts or any unavoidable reasons for cancellation of trip
- Type of vehicle will be as per the number of persons and the vehicle used will be exclusive for you but will not be at disposal. It will be as per the itinerary and Dec change sector wise.
- Extra charges are applicable for the vehicle used apart from the tour as mentioned in the itinerary.
- No refunds will be made for unused tours and hotel rooms.
- If required you can request the hotels for late check – out and the hotels will do the needful subject to availability of the room
- Vehicle is strictly point to point. It will stick to the itinerary or will cover all the points listed in itinerary. Any additional pick and drop, would cost additional to the guest and it would be directly payable to the driver.
- We will not be liable for any refunds/compensation claims arising out of the reasons including but not limited to: Force Majeure events, strikes, fairs, festivals, weather conditions, traffic problems, overbooking of hotels / flights, cancellation / re-routing of flights, closure of / entry restrictions at a place of visit, etc.
- Any refund claims on the complementary part of the package shall not be entertained.
- All disputes regarding the tour, voucher, refund, services, or whatsoever nature are subject to Jaipur Jurisdiction.
- Online payments to the company's bank account, via Google Pay account, through credit card, debit card or whatsoever means are convenience offered to the client. In case of online payments also, any dispute is subject to Jaipur Jurisdiction.
- In case of no disputes raised within 48 hours against the shared voucher or tour, it is understood that the client has read and accepted the document along with terms in the voucher/package.



## Payment Policies

- At the time of confirmation – 50% of the total package cost
- 30 Days Before Travel – Remaining Amount

## Land Package Cancellation Policy

- More than 30 Days before Travel 13% of the Package cost.
- More than 15 Days and Less than 30 days Before Travel – 50% of the Package cost.
- Less than 15 Days / No Show – 100% of the Package cost
- Travel Dates Between Dec 10-Jan 20 – 100% of the Package cost (No cancellation entertained at this time)
- Hotel /Cruise /Ferry cancellations/ retentions would be additional to Company's Cancellation charges.

## Flight Cancellation

- Individual Airline's and respective tickets have Cancellation Policy. Respective Cancellation Policy will be applicable in this case.

## Flight ticket - Important Information

- Flight tickets are just the convenience provided to the traveler, where we provide one stop solution for all your travel related requirements.
- Our Company, in any case, does not hold any responsibility of flight change, reschedule, or cancellation. Airline is solely responsible for such changes and client must communicate to the airline to resolve the issue.
- Our associate would try help you to provide the alternative arrangements but any additional cost arising, due to flight changes, must be borne by the traveler.
- We are not allowed to speak to the airline on your behalf.
- Our Company must not be held responsible for missing the flight due to known and unknown reasons.

## Recommendations for Hasslefree Journey

- Carry medicines with you as you will be travelling long distances in a single travel.
- If required, lunch and dinner restaurants can be advised accordingly.
- Make sure you are aware about the prices of the services that you are using. As few hotels charge heavily for their services. Just bargain for things.
- If you are reaching late in the evening, please call the hotel. Sometime hotels release the booking if they are not informed about your delay.
- Please ask check-out time of the hotel. Make sure to check out as per guidelines. It may reduce headaches.
- As soon as you enter the hotel, make sure to ask the facilities (with the prices if any) available in the hotel to utilize them best.
- Hotel bookings are done with your Name.
- Talk to locals so that driver will not be able to cheat you.
- Please drink sufficient water to avoid dehydration.



- Keep the beaches, monuments, gardens and the environment clean and Dispose of the garbage at proper places/ dustbins.
- Observe decency and decorum in dress, especially at places of worship.
- At the beach, parents are requested to keep an eye on their kids at all times.
- Enjoy the wilderness. Leave only footprints and take only photographs.
- Do not enter into restricted/tribal areas.
- While inside Tribal Reserve areas, do not take video, film or photographs of tribals.
- Do not light fire in forest areas
- Do not stay on the beaches or forest during nights by putting up down tents/hammocks.
- Nudity on beaches and public places is forbidden and punishable offense.
- Do not enter the National Parks without permission.