



# LADAKH

A WANDERER'S SPECTACLE



## Package Details

5 Days/4 Nights Plan for Ladakh

Total Cost: 43,450

### Package Inclusions

Rates are tentative only. Connect to us for the best rates.

Cost is total amount for 2

Deluxe Hotels

**Meals mentioned at hotel section.**

1.0 Personal Scorpio Xylo Ertiga Tavera or  
Similar

### Package Highlights

Land Package Cost: INR 43,450

3 Nights Leh

1 Night Nubra valley

Day Trip to Pangong

Inner Line Permit

## Check Our Reviews

First thing first, knowing us and reviewing our services are most important to you. We invite you to check our client's testimonials before diving into package details.

[Reviews](#)

[Google](#)

[Facebook](#)

[Trip Advisor](#)

[TT](#)





## Hotels In the Package

We will check the availability, first, as per your preference (Within the Listed Choice). However the availability in your preferred hotel is not guaranteed. We will communicate the exact hotel name before receiving any payment.

### Leh - 3 Nights Staying on - Night# 1, 3, 4

**Option# 1 - [Sangaylay Palace](#) 3 Star Luxury Hotel**  
**1 Superdeluxe Room (First Category) is/are provided along with Breakfast and Dinner at Hotel.**

**Check In 10 a.m.**  
**Check Out 8 a.m.**

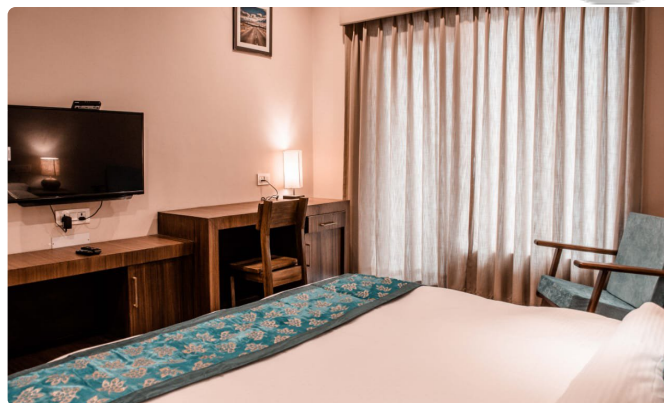


#### Facility Available

Wifi	Room Service	Restaurant	Bar	Swimming Pool	Gym	Bathtub	AC	Heater
Free	Free	Yes	No	No	No	Not-Available	Yes	No

**Option# 2 - [Utpala Retreat](#) 3 Star Deluxe Hotel**  
**1 Deluxe Room (First Category) is/are provided along with Breakfast and Dinner at Hotel.**

**Check In 10 a.m.**  
**Check Out 9 a.m.**



Facility Available

<b>Wifi</b>	<b>Room Service</b>	<b>Restaurant</b>	<b>Bar</b>	<b>Swimming Pool</b>	<b>Gym</b>	<b>Bathtub</b>	<b>AC</b>	<b>Heater</b>
Free	Free	Yes	No	No	No	Not-Available	No	No

**Option# 3 - [The Grand Ladakh](#) 3 Star Deluxe Hotel**  
**1 Deluxe Room (First Category) is/are provided along with Breakfast and Dinner at Hotel.**

**Check In** 10 a.m.  
**Check Out** 8 a.m.



Facility Available

<b>Wifi</b>	<b>Room Service</b>	<b>Restaurant</b>	<b>Bar</b>	<b>Swimming Pool</b>	<b>Gym</b>	<b>Bathtub</b>	<b>AC</b>	<b>Heater</b>
Free	Free	Yes	No	No	No	Not-Available	No	No





## Nubra Valley - 1 Nights Staying on - Night# 2

**Option# 1 - [Organic Boutique Inn](#) 3 Star Deluxe Resort**  
**1 Deluxe Room (First Category) is/are provided along with Breakfast and Dinner at Hotel.**

**Check In** noon  
**Check Out** 9 a.m.



### Facility Available

<b>Wifi</b>	<b>Room Service</b>	<b>Restaurant</b>	<b>Bar</b>	<b>Swimming Pool</b>	<b>Gym</b>	<b>Bathtub</b>	<b>AC</b>	<b>Heater</b>
Free	Free	Yes	No	No	No	Not-Available	No	No

**Option# 2 - [Organic Boutique Inn Camp](#) 3 Star Deluxe Camp**  
**1 Deluxe Camp (First Category) is/are provided along with Breakfast and Dinner at Hotel.**

**Check In** 10 a.m.  
**Check Out** 9 a.m.



### Facility Available

<b>Wifi</b>	<b>Room Service</b>	<b>Restaurant</b>	<b>Bar</b>	<b>Swimming Pool</b>	<b>Gym</b>	<b>Bathtub</b>	<b>AC</b>	<b>Heater</b>
Free	Free	Yes	No	No	No	Not-Available	No	No



**Option# 3 - [DE Nubra Camp](#) 3 Star Deluxe Camp**  
**1 Deluxe Camp (First Category) is/are provided along with Breakfast and Dinner at Hotel.**

**Check In** noon  
**Check Out** 9 a.m.



**Facility Available**

<b>Wifi</b>	<b>Room Service</b>	<b>Restaurant</b>	<b>Bar</b>	<b>Swimming Pool</b>	<b>Gym</b>	<b>Bathtub</b>	<b>AC</b>	<b>Heater</b>
Not-Available	Free	Yes	No	No	No	Not-Available	No	No



## Detailed Itinerary

### Day# 1 - Pick up from Leh Airport and Relax

#### Starts @ Leh

Arrival Leh Kushok Bakula Airport (This must be one of the Most Sensational Flights in the World. On a clear day from one side of the aircraft can be seen in the distance the peaks of K2, Nanga Parbat, Gasherbrum and on the other side of the aircraft, so close that you feel you could reach out and touch it, is the Nun Kun massif.) Upon arrival you will met by the representative and transfer to Hotel for Check in. Half day for rest and leisure to acclimatize in Hotel.

Overnight stay @ Leh Hotel/Resort.

#### Inclusions (Not in Execution Order)

Inner Line Permit: Inner Line Permit is included

### Day# 2 - Travel to Nubra via Khardungla-

#### Starts @ Leh

Post breakfast we drive to Nubra Valley. The road journey from Leh to Nubra Valley passes over Khardung La (The Highest Motorable Road In The World) at 5,602 Mtrs / 18,390 Ft, around 39 km from Leh. Enroute we will cover Diskit monastery, further drive to Hundur, Upon Arrival to Hundur where you have opportunity to ride on a bactrian camel (double humped) amidst the sand dunes of this high altitude desert with snowcapped mountains on the horizon. Between Hundur and Diskit you come across sand dunes besides the road. Seen in isolation you could well be amongst the sand dunes of the Thar Desert in Rajasthan.

Overnight stay @ Nubra Valley Hotel/Resort.

#### Inclusions (Not in Execution Order)

Deskite - Hundur 2 Days: Vehicle, Toll Tax, Parking, & Municipal Taxes is included.

### Day# 3 - Return to Leh from Nubra

#### Starts @ Nubra Valley

Post breakfast enjoy the remaining sights in Nubra and later head back to Leh.

Overnight stay @ Leh Hotel/Resort.

#### Inclusions (Not in Execution Order)

### Day# 4 - Day Trip to Pangong from Leh - Monastery visit on the way

#### Starts @ Leh

Post Breakfast, start the trip to Pangong to explore the beauty of lake

En-route visit the following monuments.

3 Idiot Famed School



Thikshey Monastery  
Hemis Monastery  
Shey Palace and Museum  
and later we drive to Pangong via Changla Pass 5486 Mtrs.  
After spending a few hours, return to Leh.

Drive back to Leh.

Overnight stay @ Leh Hotel/Resort.

**Inclusions (Not in Execution Order)**

Pangong Lake day trip: Vehicle cost is included is included.

Day# 5 - Return with unlimited memories of mountains

**Starts @ Leh**

In the morning transfer to Domestic Airport to catch the flight for your onward Destination.

End your tour on High notes.....

**Inclusions (Not in Execution Order)**

Drop at Leh Airport: Vehicle, Toll Tax, Parking, & Municipal Taxes is included





## Trip Exclusions

- Heater Charges
- Permit-related to Rohtang Pass
- Emergency evacuation cost
- Travel/Medical insurance
- Expenses for personal nature
- Any chargeable services utilized in the hotel.
- Fees / Charges related to any tourist Permit.
- A personal medical kit including Oxygen Cylinder
- Flight Tickets/Train Ticket until unless not specified above.
- Camera Charges, and Tip at different sites and restaurants.
- Anything not mentioned under Inclusions in your itinerary is an exclusion

## Covid Postponement Policies

- Applicable only In case of Lockdown at Starting State or Destination State, or the traveller is Infected with Covid.
- 1 Year Postponement (From Date of Travel) voucher would be Provided.
- Any Cancellation charges(Cruise/Flight/vehicle cancellation & Hotel Retention) would be additional
- Our Service Charges would be Zero.
- Rate Differences, as per the new travel date, would be additional at the time of booking.
- A traveller can change the destination and increase/decrease/change the travellers, however minimum package cost must be equal/higher to postponed package cost.
- Any confirmed postponed trip, can not be cancelled further for any unforeseen reasons.
- Cordinate with Airline Flight changes/amendments/cancellations/credit-shell.
- In case of postponement, dates must be informed minimum 45 days before travel.
- In case of Cancellation, Package Cancellation Policy will be applicable.

## Payment Policies (As Finalized)

- Payment must be paid as per the installments mentioned in the voucher.
- As per the Standard Terms - 50% of the total package cost to confirm the booking.
- Remaining 50% of the total package cost One month before travel date.

## Land Package Cancellation Policy

- More than 30 Days before Travel 13% of the Package cost.
- More than 15 Days and Less than 30 days Before Travel – 50% of the Package cost.
- Less than 15 Days / No Show – 100% of the Package cost
- Travel Dates Between Dec 10-Jan 20 – 100% of the Package cost (No cancellation entertained at this time)
- Hotel /Cruise /Ferry cancellations/ retentions would be additional to Company's Cancellation charges.



## Flight Cancellation

- Individual Airline's and respective tickets have Cancellation Policy. Respective Cancellation Policy will be applicable in this case.

## Flight ticket - Important Information

- Flight tickets are just the convenience provided to the traveler, where we provide one stop solution for all your travel related requirements.
- Our Company, in any case, does not hold any responsibility of flight change, reschedule, or cancellation. Airline is solely responsible for such changes and client must communicate to the airline to resolve the issue.
- Our associate would try help you to provide the alternative arrangements but any additional cost arising, due to flight changes, must be borne by the traveler.
- We are not allowed to speak to the airline on your behalf.
- Our Company must not be held responsible for missing the flight due to known and unknown reasons.

## Bike Rent - Terms and Conditions

- It is really important to judge the condition of the bike, please request for a test drive before hiring the one as you would be travelling on the difficult terrains.
- You must have to submit Deposit amount and your ID card to avail the bike.
- You should know that the Luggage Carrier / Saddle bag costs extra per day with the bike you will rent.
- You should know that the Petrol charges are borne by the rider until unless suggested otherwise.
- Half day rental means you need to return the bike by 2.00 PM else the full day charges will apply.
- Bikes rented outside Leh are not allowed for sightseeing inside Ladakh including Pangong Tso, Nubra Valley, Khardung La etc. Outside rented bikes can only be used to enter Leh from Srinagar – Leh Highway or Manali – Leh Highway. Hence, for local sightseeing you need to rent bike again from a bike rental shop in Leh.
- The Ladakh motor bike rental association has setup checkpoints at various sightseeing locations and they are mostly very active in checking especially in season time. Hence, do not get into any kind of ugly situation in case confronted and at fault. It will most likely ruin your trip and days you took off from office. Best bet in such cases is to act ignorant of the rule and agree to return to Leh to rent a bike motor bike from Leh for sightseeing.
- Some bike rental shops in Manali also have tie-up with bike rental shops in Leh. In such tie-ups, if you present back the slip of bike rental charges from Leh shop to Manali guys then they will waive of 50% of rental charges on their bike rent for those number of days. However, you must verify about such tie-ups and get them in written before striking the deal.
- Private bikes are completely allowed to go anywhere in Ladakh. The private bike should be in your name or in the name of your father/mother. Mostly if there is any document proof associated to your and bike owners identities, it works.