





5 Days/4 Nights Plan for Meghalaya Assam

Total Cost: 38,910

What's Included?

- Rates are tentative only. Connect to us for the best rates.
Cost is total amount for 2
- * Standard Hotels
 - * **Meals mentioned at hotel section.**
 - * 1.0 Personal Sedan - Etios Dezire or Similar

What will we visit?

- * Land Package Cost: INR 38,910
- * 2 Nights stay at Shillong
- * 2 Night stay at Cherrapunji
- * Double Decker Bridge
- * Visit to Dawki River

Check Our Reviews

First thing first, knowing us and reviewing our services are most important to you. We invite you to check our client's testimonials before diving into package details.



[Reviews](#)



[Google](#)



[Facebook](#)

[Trip Advisor](#)



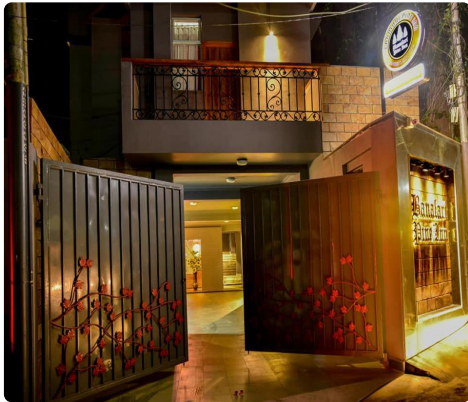
What are the hotels included in the package?

We will check the availability, first, as per your preference (Within the Listed Choice). However the availability in your preferred hotel is not guaranteed. We will communicate the exact hotel name before receiving any payment.

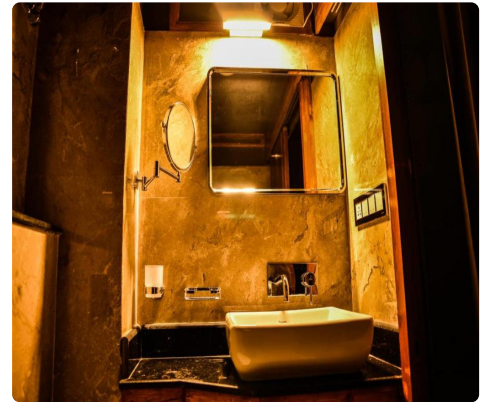
Shillong - 2 Nights Staying on - Night# 1,2

Option# 1 - [Banalari Pine Inn](#) ★★☆☆

Check In: noon
Check Out: noon



1 Standard Room (First Category)
Deluxe Category Inn
Breakfast at Hotel.



Free

Free Service

Restaurant

Pool

Gym

Heater

Heaters are provided On Demand, and may incur additional charges.



Cherrapunji - 2 Nights Staying on - Night# 3,4

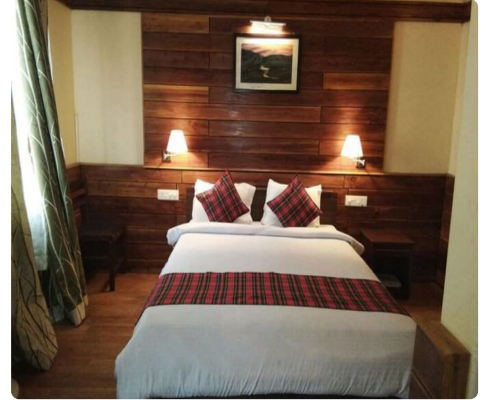
Option# 1 - [Kutmadan Resort](#) ★★☆☆

Check In: noon

Check Out: noon



1 Standard Room (First Category)
Deluxe Category Resort
Breakfast at Hotel.



 Free

 Free Service

 Restaurant

 Pool

 Gym



Detailed Itinerary

Day# 1 **Guwahati** Pick up from Guwahati Airport, Head to Shillong

After arriving at Guwahati (GAU) Airport / GHY Railway Station move towards Shillong (49000 ft). Experience the majestic beauty of Umium Lake surrounded by Sylvan Hills. On arrival, check-in to the hotel.

Overnight stay @ Shillong Hotel/Resort.

Inclusions

Pick up/Drop from/At Airport: Vehicle, Toll, Parking, Muncipal Tax is included.

Day# 2 **Shillong** Shillong Local Sightseeings

After breakfast enjoy local sightseeing tour of Shillong, 'Scotland of the East'. We will be visiting Cathedral Church, Lady Hydari Park, the Orchidarium, Elephant Falls 7 the Golf course. Thereafter, we will drive to the shilling peak to enjoy a splendid view of Shillong.

Overnight stay @ Shillong Hotel/Resort.

Inclusions

Day# 3 **Shillong** Mawlynnong and Dawki River - Cherrapunji Stay

It would be little hectic day as you would be covering a trek, a river and a beautiful village. Start the day by heading to the Asia's cleanest village Mawlynnong and river Dawki "Umgnot river". After your arrival to Mawlynnong we will visit the cleanest village Mawlynnong. Witness the astonishing Living Root Bridge at Riwai Village which is made of roots from trees. Making way through this fresh environment now you will be heading towards DAWKI "Umgnot River". Be amazed after your first glance at the scene of the beautiful crystal in color of this river. Have a thrilling experience of riding the wooden lean boat of Dawki. Enjoy some quality time at Indo-Bangladesh border with your loved ones.

Overnight stay @ Cherrapunji Hotel/Resort.

Inclusions

Mawlynnong Day Trip: Vehicle, Toll, Parking, Muncipal Tax is included

Day# 4 **Cherrapunji** Cherrapunji Local Sightseeings

After breakfast, we would start the local sight visits of Cherrapunji also known as Sohra. Elephanta Falls and Shillong peak with some beautiful road beauty viewpoints. Seven Sister Falls, After reaching the location you will visit Mawsmi Cave, Garden of caves, centuries old limestone cave and the Seven Sisters Falls which symbolizes the seven states of North East, Nawkhalika Falls, kynrem falls, lyngksiar falls. Night stay at Sohra/ Cherrapunji.

Overnight stay @ Cherrapunji Hotel/Resort.

Inclusions



After breakfast, we would visit the sights that are yet pending. Based on the your flight time, you must choose the return time from Cherrapunji. It would take minimum 4 hours to reach Guwahati. So chose the right time, and head back to Guwahati to catch the flight or train.

Inclusions

cherrapunji to guwahati: Vehicle, Toll, Parking, Muncipal Tax is included



Trip Exclusions

- Any chargeable services utilized in the hotel, and mentioned in the inclusion section.
- Gala Dinner (24 Dec, 25 Dec, 31 Dec, 14 Feb, any additional date) is additional until mentioned in the quote.
- Christmas Dinner and New Year Dinner are mandatory in most of the hotels.
- Any expense which are done for personal entertainment.
- Flight Tickets/Train Ticket until unless not specified above.
- Camera Charges, and Tip at different sites and restaurants.
- Not mentioned specifically above. If something is committed and not mentioned in inclusion, please bring this in our notice ASAP.
- City Tour Tickets are included only in Andaman. In any other Indian states, it is not included.
- Additional Charges in case of Late Night (Post 8:00 PM) and Early Morning (Pre 6:00 AM) Picks up and Drops. (Not Informed during the itinerary discussions)

Cancellation Policy

Land Package Cancellation Charges

- More than 30 Days before Travel - 13% of the total Package cost. Hotel /Cruise /Ferry cancellations/ retentions would be additional to the service charges of Cancellation.
- More than 15 Days and Less than 30 days Before Travel – 50% of the Package cost.
- Less than 15 Days / No Show – 100% of the Package cost.
- Travel Dates Between Dec 10 - Jan 20 – 100% of the Package cost (No cancellation entertained at this time)

Flight Cancellation Charges

- Individual Airline's and respective tickets have Cancellation Policy printed. Respective Cancellation Policy will be applicable in every case.