





Package Details

8 Days/7 Nights Plan for Himachal pradesh Delhi

Total Cost: 0

Package Inclusions

Rates are tentative only. Connect to us for the best rates.

Cost is total amount for 2

Deluxe Hotels

Meals mentioned at hotel section.

1.0 Personal Sedan - Etios Dezire or Similar

Package Highlights

Land Package Cost: INR 0

#2 Nights at Shimla

3 Nights at Manali

2nights at Delhi

#Pickup DRop at Delhi

Check Our Reviews

First thing first, knowing us and reviewing our services are most important to you. We invite you to check our client's testimonials before diving into package details.

[Reviews](#)

[Google](#)

[Facebook](#)

[Trip Advisor](#)

[TT](#)



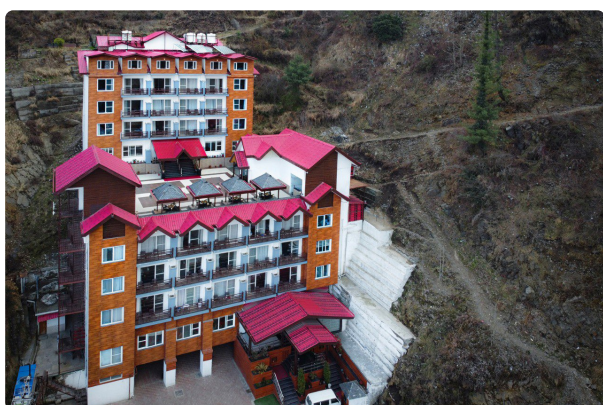
Hotels In the Package

We will check the availability, first, as per your preference (Within the Listed Choice). However the availability in your preferred hotel is not guaranteed. We will communicate the exact hotel name before receiving any payment.

Shimla - 2 Nights Staying on - Night# 1, 2

Option# 1 - [The Royal Regency](#) 3 Star Luxury Hotel
1 Deluxe Room (First Category) is/are provided along with Breakfast and Dinner at Hotel.

Check In 1 p.m.
Check Out 9 a.m.



Facility Available

Wifi	Room Service	Restaurant	Bar	Swimming Pool	Gym	Bathtub	AC	Heater
Free	Free	Yes	No	No	No	Not-Available	Yes	No



Manali - 3 Nights Staying on - Night# 3, 4, 5

Option# 1 - [Bodh International](#) 3 Star Deluxe Hotel
3 Deluxe Room (First Category) is/are provided along with Breakfast and Dinner at Hotel.

Check In noon
Check Out 9 a.m.



Facility Available

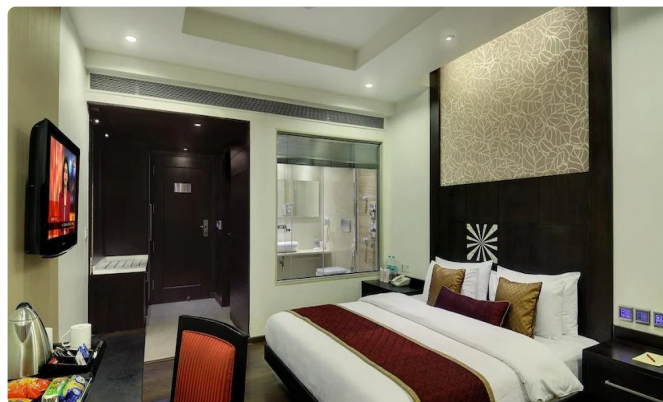
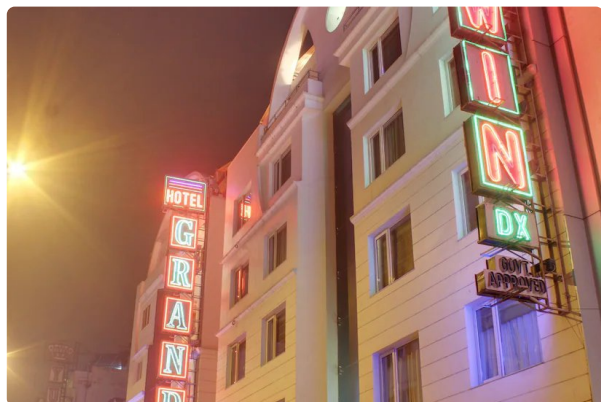
Wifi	Room Service	Restaurant	Bar	Swimming Pool	Gym	Bathtub	AC	Heater
Free	Free	Yes	No	No	No	Not-Available	Yes	No



Delhi - 2 Nights Staying on - Night# 6, 7

Option# 1 - **Godwin Deluxe** 3 Star Deluxe Hotel
3 Executive Room (First Category) is/are provided along with **Breakfast and Dinner** at Hotel.

Check In noon
Check Out noon



Facility Available

Wifi	Room Service	Restaurant	Bar	Swimming Pool	Gym	Bathtub	AC	Heater
Free	Free	Yes	No	No	No	Not-Available	Yes	No



Detailed Itinerary

Day# 1 - Delhi to Shimla

Starts @ Delhi

Pickup From Delhi Railway station drive to cover Hill station which is known as Dev Bhumi Himachal Pradesh . on arrival Check in at the Hotel and relax for the day at your own discretion. At night, have dinner at Hotel.

Overnight stay @ Shimla Hotel/Resort.

Inclusions

Day# 2 - SHIMLA TO KUFRI EXCURSION

Starts @ Shimla

Today Morning After a Filling Delicious Breakfast, Visit Kufri, Popular among Trekkers. the Salubrious Climate and Stunning Natural Beauty Makes Kufri a Perfect Summer Getaway. Kufri is the Venue for Annual Winter Sports Festival Held in February. Kufri is also Renowned for other Adventures Activities such as Skiing Tobogganing (sliding Downhill On a Sled) Etc.

kufri Has the Oldest Skiing Slopes in Himachal Pradesh. Kufri is also a Haven for Nature Enthusiasts and Wildlife Lovers as the Himalayan Nature Park is Situated On the Outskirts of the Town. the Park is Home to Over 180 Varieties of Fauna.

Kufri is blessed with tranquility, scenery and is dotted with tourist attractions like Mahasu Peak, Chini Bunglow, Indira Tourist Park etc. When back in Shimla, visit the Vice Regal Lodge- once the summer residence of various British viceroys, it boasts of an interesting English Renaissance architecture. Thereafter in the evening, enjoy a leisure walk on the Mall Road. Delicious dinner and overnight stay.

after Ample of Shopping Time Return to Your Hotel for a Mouth Watering Dinner.

overnight in the Hotel.

Overnight stay @ Shimla Hotel/Resort.

Inclusions

Day# 3 - Travel to Manali from Shimla via Kullu

Starts @ Shimla

Today morning after breakfast, check out from the hotel and proceed to Manali. It is approximately 250 KM road journey through the scenic mountains. On the way, we will visit sundernagar lake , Pandoh Dam , Vaishno Devi temple Kullu. kullu sight seen includes Local Market, Pashmina & local kullu shawl factory. After the Kullu Sightseeings Drive to Manali. On the way pay your heeds to Hanogi Mata and stop for a while at Pandoh Dam built on river Beas. Overnight stay at hotel.

Overnight stay @ Manali Hotel/Resort.

Inclusions

Shimla to Manali Via Kullu: Vehicle, Toll, Parking, Municipal Tax is included



Day# 4 - Manali Sightseeings

Starts @ Manali

Post breakfast, you can enjoy the pristine beauty of Manali.

a vehicle shall pick you up for the sightseeing. We will cover Hidimba Devi Temple, Ban Vihar, Mall Road, Vashishth Temple, Monastery in Manali, and Manali Club house.

Overnight stay @ Manali Hotel/Resort.

Inclusions

Day# 5 - Manali solang Valley

Starts @ Manali

Today we will be covering Manali snow point which is called snow valley major attraction of day to enjoy snow activities and have a vast view of snowy clapped ountains , you can do adventure activities at solang valley at your own expenses like paragliding , snow ride, zipline and much more , later drive to atal tunnel to visit Indian Great construction in Himalayas, in eve return to hotel for overnight stay .

Overnight stay @ Manali Hotel/Resort.

Inclusions

Manali to Rohtang Pass Via snow line/ snow point: Vehicle is included

Day# 6 - Manali To Delhi

Starts @ Manali

Post freshup and having your meal in morning time to say good bye to Nature lap and begin your journey back to your starting point which will take around 9-11 hrs max . Drop at Railway station to finish your trip on high Notes .

Overnight stay @ Delhi Hotel/Resort.

Inclusions



Day# 7 - Delhi Pickup and Head to Agra

Starts @ Delhi

Post bpickup from delhi airport we will head to agra . Later we would head to Agra. Post arrival at Agra, check in the hotel. Agra is famous for magnificent Taj Mahal, one of the Seven Wonders of the World. Spend ample time exploring this iconic monument. It would take at-least 3 hours to visit the single monument. Later if time allows, we can visit Agra Fort, else it can be visited next day too. Agra Fort is a UNESCO World Heritage Site, and it is admired for its stunning architecture and history.

Overnight stay @ Agra Hotel/Resort.

Inclusions

Delhi - Agra: Vehicle, Toll, Parking, Municipal Tax is included

Day# 8 - Drop at airport

Starts @ Delhi

After breakfast we move to cover sightseeing which we have not cover so far. Drop at station/airport on ticket timing.

Inclusions



Covid Terms and Conditions

- It is compulsory for people travelling to state to either carry a Covid-negative report or vaccination certificate (two doses).
- In case of you are infected with Covid for 2-3 days before your travel, we will provide an option of free postponement till one year (from Your date of travel.). However please note that if hotel/Cruise changes the rate, price difference will apply. Subject to hotel terms and conditions.
- In case of lockdown, we will provide free postponement, as per earlier point.
- For Flight changes/amendments/cancellations/credit-shell, you will have to coordinate with Airline for the same.
- In case of postponement, dates must be minimum communicated 45 days before travel. #In case of Cancellation, in whatsoever circumstances, Package policy will apply.
- In case hotel is not providing Postponement, amount remitted to Hotel can not be refunded/returned/used in future.

Trip Exclusions

- Any chargeable services utilized in the hotel.
- Gala Dinner (24 Dec, 25 Dec, 31 Dec, 14 Feb, any additional date) is additional until mentioned in the quote.
- Any expense which are done for personal entertainment.
- Flight Tickets/Train Ticket until unless not specified above.
- Camera Charges, and Tip at different sites and restaurants.
- Not mentioned specifically above. If something is committed and not mentioned in inclusion, please bring this in our notice ASAP.

Payment Policies

- At the time of confirmation – 50% of the total package cost
- 30 Days Before Travel – Remaining Amount

Land Package Cancellation Policy

- More than 30 Days before Travel 13% of the Package cost.
- More than 15 Days and Less than 30 days Before Travel – 50% of the Package cost.
- Less than 15 Days / No Show – 100% of the Package cost
- Travel Dates Between Dec 10-Jan 20 – 100% of the Package cost (No cancellation entertained at this time)
- Hotel /Cruise /Ferry cancellations/ retentions would be additional to Company's Cancellation charges.

Flight Cancellation

- Individual Airline's and respective tickets have Cancellation Policy. Respective Cancellation Policy will be applicable in this case.



Flight ticket - Important Information

- Flight tickets are just the convenience provided to the traveler, where we provide one stop solution for all your travel related requirements.
- Our Company, in any case, does not hold any responsibility of flight change, reschedule, or cancellation. Airline is solely responsible for such changes and client must communicate to the airline to resolve the issue.
- Our associate would try help you to provide the alternative arrangements but any additional cost arising, due to flight changes, must be borne by the traveler.
- We are not allowed to speak to the airline on your behalf.
- Our Company must not be held responsible for missing the flight due to known and unknown reasons.

Recommendations for Hasslefree Journey

- Carry medicines with you as you will be travelling long distances in a single travel.
- If required, lunch and dinner restaurants can be advised accordingly.
- Make sure you are aware about the prices of the services that you are using. As few hotels charge heavily for their services. Just bargain for things.
- If you are reaching late in the evening, please call the hotel. Sometime hotels release the booking if they are not informed about your delay.
- Please ask check-out time of the hotel. Make sure to check out as per guidelines. It may reduce headaches.
- As soon as you enter the hotel, make sure to ask the facilities (with the prices if any) available in the hotel to utilize them best.
- Hotel bookings are done with your Name.
- Talk to locals so that driver will not be able to cheat you.
- Please drink sufficient water to avoid dehydration.
- Keep the beaches, monuments, gardens and the environment clean and Dispose of the garbage at proper places/ dustbins.
- Observe decency and decorum in dress, especially at places of worship.
- At the beach, parents are requested to keep an eye on their kids at all times.
- Enjoy the wilderness. Leave only footprints and take only photographs.
- Do not enter into restricted/tribal areas.
- While inside Tribal Reserve areas, do not take video, film or photographs of tribals.
- Do not light fire in forest areas
- Do not stay on the beaches or forest during nights by putting up down tents/hammocks.
- Nudity on beaches and public places is forbidden and punishable offense.
- Do not enter the National Parks without permission.