





## 8 Days/7 Nights Plan for Meghalaya Assam

**Total Cost: 0**

### What's Included?

Rates are tentative only. Connect to us for the best rates.

Cost is total amount for 2

- \* Standard Hotels
- \* **Meals mentioned at hotel section.**
- \* 1.0 Personal Sedan - Etios Dezire or Similar

### What will we visit?

- \* Land Package Cost: INR 0
- \* 2 Nights stay at Kaziranga
- \* 2 Nights stay at Shillong
- \* 2 Nights stay at Cherrapunji
- \* 1 Night stay at Guwahati
- \* Double Decker Bridge
- \* Visit to Dawki River

## Check Our Reviews

First thing first, knowing us and reviewing our services are most important to you. We invite you to check our client's testimonials before diving into package details.



[Reviews](#)



[Google](#)



[Facebook](#)

[Trip Advisor](#)



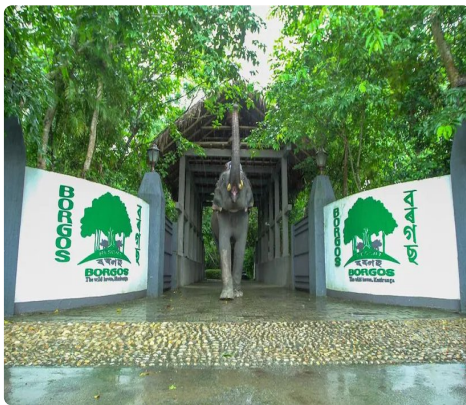
## What are the hotels included in the package?

We will check the availability, first, as per your preference (Within the Listed Choice). However the availability in your preferred hotel is not guaranteed. We will communicate the exact hotel name before receiving any payment.

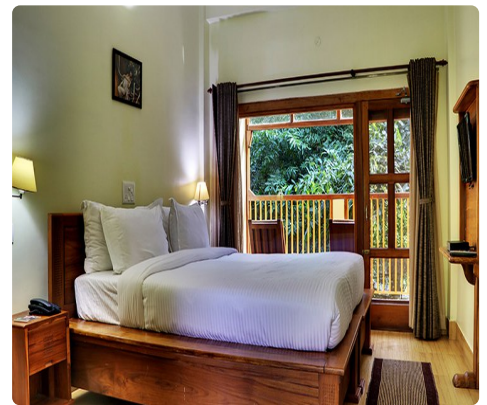
### Kaziranga - 2 Nights Staying on - Night# 1, 2

Option# 1 - [Borgos The Wild Haven](#) ★★★★★

Check In: noon  
Check Out: noon



**1 Kohora Studio Room (First Category)**  
Luxury Category Resort  
**Breakfast at Hotel.**



Free



Free Service



Restaurant



Bar



AC



Heater

Heaters are provided On Demand, and may incur additional charges.



## Shillong - 2 Nights Staying on - Night# 3, 4

Option# 1 - [Banalari Pine Inn](#) ★★☆☆

Check In: noon

Check Out: noon



**1 Standard Room (First Category)**  
Deluxe Category Inn  
Breakfast at Hotel.



 Free

 Free Service

 Restaurant

 Pool

 Gym

 Heater

Heaters are provided On Demand, and may incur additional charges.



## Cherrapunji - 2 Nights Staying on - Night# 5,6

Option# 1 - [Kutmadan Resort](#) ★★☆☆

Check In: noon

Check Out: noon



**1 Standard Room (First Category)**  
Deluxe Category Resort  
**Breakfast at Hotel.**



 Free

 Free Service

 Restaurant

 Pool

 Gym



## Guwahati - 1 Nights Staying on - Night# 7

Option# 1 - [Hotel The Kalyaniz](#) ☆☆☆

Check In: noon  
Check Out: 9 a.m.



**1 Corporate Room (First Category)**  
Deluxe Category Hotel  
**Breakfast at Hotel.**



 Not-Available    Free Service    Restaurant    Pool    Gym    AC



## Detailed Itinerary

**Day# 1 Guwahati** Pick up from Guwahati Airport and Head to Kaziranga

On arrival at Guwahati Airport / Railway Station our representative cum driver shall meet you and we will head to Kaziranga National Park. The park is the home of “One Horned Rhinoceros”. Along with the iconic Greater one-horned rhinoceros, the park is the breeding ground of elephants, wild water buffalo, and swamp deer. Over the time, the tiger population has also increased in Kaziranga, and that’s the reason why Kaziranga was declared as Tiger Reserve. Check in at your hotel. Evening is free for the leisure.

**Overnight stay @ Kaziranga Hotel/Resort.**

### Inclusions

Guwahati to Kaziranga: Vehicle, Toll, Parking, Municipal Tax is included

**Day# 2 Kaziranga** Kaziranga Sightseeings

Early morning, we will explore any one zone (Kohora range, Bagori range, Agoratoli range, and Waterfall) of Kaziranga National Park on the back of an Elephant (Elephant Safari cost excluded until not mentioned in the inclusions). Apart from the Rhino, other species found are Hog Deer, Swamp Deer, Wild Buffalo, Elephants and tiger. We can spot most of the species and on a lucky day spotting tiger is cherry on the cake. It is also home to pelicans, storks and darters as there are a number of water bodies inside the Park. Return to the resort for breakfast. In the afternoon enjoy jeep safari (At your own cost) through the National Park. Return to the hotel.

**Overnight stay @ Kaziranga Hotel/Resort.**

### Inclusions

**Day# 3 Kaziranga** Kaziranga to Shillong

After breakfast proceed for Shillong (4,900 ft.), called 'Scotland of the East'. Enroute visit Umium Lake, a majestic placid lake with its surrounding sylvan hills. On arrival at Shillong, check in at your hotel. In the evening, if time and energy allow, we can visit the local market at Shillong.

**Overnight stay @ Shillong Hotel/Resort.**

### Inclusions

kaziranga to Shilong: Vehicle, Toll, Parking, Municipal Tax is included

**Day# 4 Shillong** Shillong Local Sightseeings

After breakfast enjoy local sightseeing tour of Shillong, ‘Scotland of the East’. We will be visiting Cathedral Church, Lady Hydari Park, the Orchidarium, Elephant Falls 7 the Golf course. Thereafter, we will drive to the shilling peak to enjoy a splendid view of Shillong.

**Overnight stay @ Shillong Hotel/Resort.**

### Inclusions

**Day# 5 Shillong****Mawlynnong and Dawki River - Cherrapunji Stay**

It would be little hectic day as you would be covering a trek, a river and a beautiful village. Start the day by heading to the Asia's cleanest village Mawlynnong and river Dawki "Umgnot river". After your arrival to Mawlynnong we will visit the cleanest village Mawlynnong. Witness the astonishing Living Root Bridge at Riwai Village which is made of roots from trees. Making way through this fresh environment now you will be heading towards DAWKI "Umgnot River". Be amazed after your first glance at the scene of the beautiful crystal in color of this river. Have a thrilling experience of riding the wooden lean boat of Dawki. Enjoy some quality time at Indo-Bangladesh border with your loved ones.

**Overnight stay @ Cherrapunji Hotel/Resort.**

**Inclusions**

Mawlynnong Day Trip: Vehicle, Toll, Parking, Municipal Tax is included

**Day# 6 Cherrapunji****Double Decker Bridge and Rainbow Waterfall from Cherrapunji**

After breakfast we will head to we will cover the double decker bridge. The root bridges themselves are actually in a tiny little village of Nongriat in the East Khasi Hills.

So, you need to reach a place called Tyrna Village which is where the hike begins. It would take 6-7 hours to cover the bridge along with famous rainbow waterfall.

Later we will return to Cherrapunji.

**Overnight stay @ Cherrapunji Hotel/Resort.**

**Inclusions****Day# 7 Cherrapunji****Cherrapunji to Guwahati**

After breakfast, visit Thangkharang Park, Khasi Monoliths, Khoh Ramhah, and Kynrem falls. Visit Double root living bridge as there are 3500 steps to reach to the top so you would need 6-7 hours to cover the same. (Double decker bridge can be enjoyed while coming to Cherrapunji also). Later post visiting, we will leave to Guwahati. On reaching, check-in at the hotel and later, go out for a visit to the Kalakshetra, where they exhibit a light and sound show displaying Assamese culture and history. You can even opt for an evening cruise on the Brahmaputra. Finally, return to the hotel and spend the night.

**Overnight stay @ Guwahati Hotel/Resort.**

**Inclusions**

cherrapunji to guwahati: Vehicle, Toll, Parking, Municipal Tax is included

**Day# 8 Guwahati****Return to Your Hometown with unlimited memories**

After breakfast, we would visit the sights that are yet pending especially Maa Kamakhya Temple. Based on the your flight time, you must choose the return time.

**Inclusions**





---

Pick up/Drop from/At Airport: Vehicle, Toll, Parking, Muncipal Tax is included

---



## Trip Exclusions

- Any chargeable services utilized in the hotel, and mentioned in the inclusion section.
- Gala Dinner (24 Dec, 25 Dec, 31 Dec, 14 Feb, any additional date) is additional until mentioned in the quote.
- Christmas Dinner and New Year Dinner are mandatory in most of the hotels.
- Any expense which are done for personal entertainment.
- Flight Tickets/Train Ticket until unless not specified above.
- Camera Charges, and Tip at different sites and restaurants.
- Not mentioned specifically above. If something is committed and not mentioned in inclusion, please bring this in our notice ASAP.
- City Tour Tickets are included only in Andaman. In any other Indian states, it is not included.
- Additional Charges in case of Late Night (Post 8:00 PM) and Early Morning (Pre 6:00 AM) Picks up and Drops. (Not Informed during the itinerary discussions)

## Cancellation Policy

### Land Package Cancellation Charges

- More than 30 Days before Travel - 13% of the total Package cost. Hotel /Cruise /Ferry cancellations/ retentions would be additional to the service charges of Cancellation.
- More than 15 Days and Less than 30 days Before Travel – 50% of the Package cost.
- Less than 15 Days / No Show – 100% of the Package cost.
- Travel Dates Between Dec 10 - Jan 20 – 100% of the Package cost (No cancellation entertained at this time)

### Flight Cancellation Charges

- Individual Airline's and respective tickets have Cancellation Policy printed. Respective Cancellation Policy will be applicable in every case.